

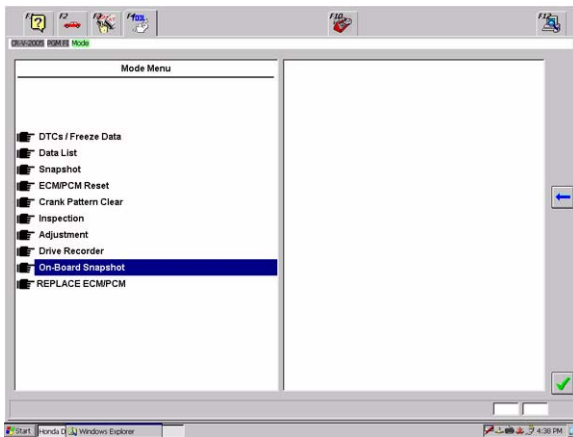
## Troubleshooting a Stalling Engine? Take a Snapshot With the HDS

NOTE: This article applies to '03-'05 MDXs, '05 RLs, '05 RSXs, '04-'05 TLs, and '05 TSXs.

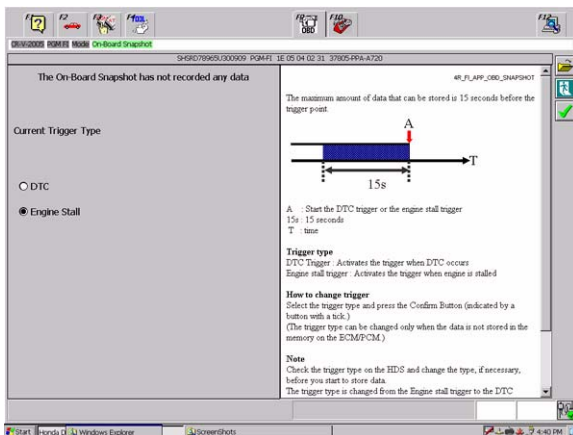
The On-Board Snapshot feature of the HDS can make troubleshooting a stalling engine a snap.

To troubleshoot a stalling engine, you need to first change the trigger type from **DTC** to **Engine stall**. Here's how:

1. Make sure the HDS software is version 1.008.016 or later.
2. Connect the HDS to the 16P data link connector (DLC). Turn the ignition switch to ON (II). Turn on the HDS.
3. At the screen prompts, enter the VIN (if you're asked) and the odometer reading.
4. From the **Select Mode** screen, select **Honda Systems**. From the **System Selection Menu**, select **PGM FI**.
5. From the **Mode Menu**, select **On-Board Snapshot**. If the ECM/PCM has data from a earlier DTC, the HDS will download and store it. After the download is finished, you can then change the trigger type.



6. Change the trigger type from **DTC** to **Engine stall**.

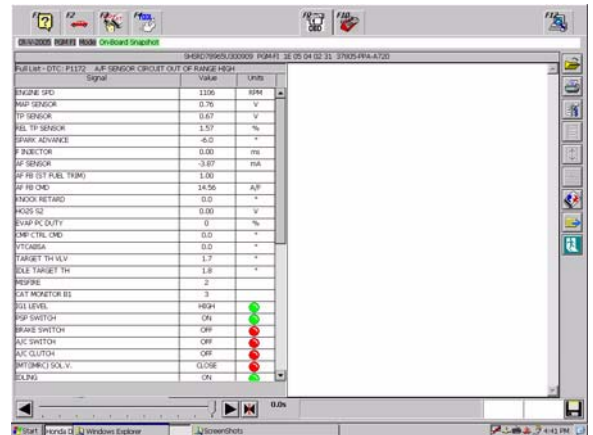
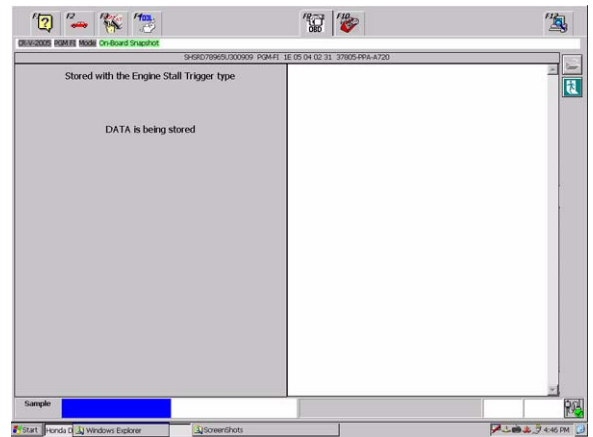


7. Turn off and disconnect the HDS.

Test-drive the vehicle until the engine stalls. If your client is the only one who can get the engine to stall, have him or her drive the vehicle and bring it back to your shop as soon as it does. The ECM/PCM will capture and store the engine parameters for up to **15 seconds** before the engine stalled.

To download the snapshot data to the HDS, follow these steps:

1. Connect the HDS to the 16P DLC. Turn the ignition switch to ON (II). Turn on the HDS.
2. At the screen prompts, enter the VIN (if you're asked) and the odometer reading.
3. From the **Select Mode** screen, select **Honda Systems**. From the **System Selection Menu**, select **PGM FI**.
4. From the **Mode Menu**, select **On-Board Snapshot**. The HDS automatically pulls the data stored in the ECM/PCM and displays it on the display screen:



Once you get your snapshot data, you can send it to Tech Line for analysis. See the article "Sending HDS Snapshots to Tech Line" in the October '04 issue of *ServiceNews* for the how-to's.

## Rearview Camera Stays On After Shifting From R to D

A software bug can cause the rearview camera in a '05 MDX to stay on after you shift from **R** to **D**. To fix this problem, you need to install navigation DVD software version 4.13C. This software sports a white label, and it's what comes in current production '05 MDXs. Here's how to install this software:

1. Slide the front passenger's seat all the way back.
2. Start the engine.
3. Open the navigation unit front cover.
4. Press the **EJECT** button, and remove the DVD.
5. Insert the new DVD with software version 4.13C, and close the front cover. The navigation system then downloads the data. You must leave the engine running until the download is complete, then you can turn it off.
6. Open the front cover, and eject the new DVD. Remove it, and insert the original DVD. Close the front cover.
7. Slide the front passenger's seat all the way forward.
8. Start the engine, and make sure the rearview camera works normally. If there's a **1- or 2-second** delay for the image to appear or go off the display screen, that's OK; it's just a normal characteristic.
9. Do a map match. (See page 22-579 of the 2003–05 MDX S/M. Online, enter the keyword **NAVI**, and select **How to Troubleshoot the Navigation System** from the list.)

## Look for Fuses in Glove Box Instead of Coin Box

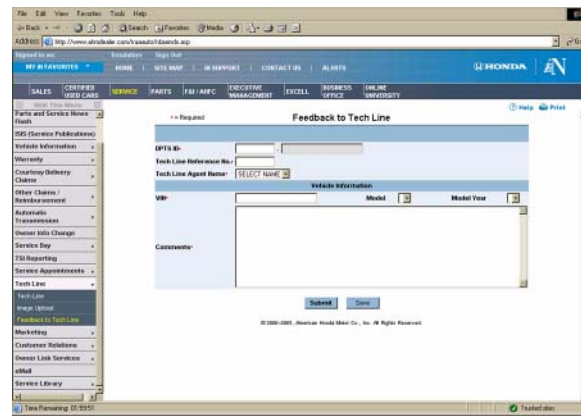
To keep the battery from draining during vehicle shipment, some fuses are pulled from the underhood fuse/relay box and stored in the coin box. Over the next few months, each of the factories will change the storage location from the coin box to the glove box. All TQI-related S/Bs will also be updated to reflect this change.

## New Way to Send Feedback to Tech Line

Starting September 9th, you won't have **Tech Line problem resolution** as a category choice when using ISIS Feedback. It's history.

A new feedback feature has been added to the **Tech Line** menu in the *iN* just for reporting vehicle fixes. It lets you send feedback directly to Tech Line without going through ISIS. You need to start using this new feature. Here's how:

1. From the *iN* main menu, click on **SERVICE**.



2. Click on **Tech Line**.
3. Click on **Feedback to Tech Line**.
4. Enter your DPTS number, the Tech Line reference number, the VIN, and the name of the last Tech Line specialist you talked with.
5. Click on **Submit**. Your feedback will be sent to the Tech Line Specialist e-mail in-box.

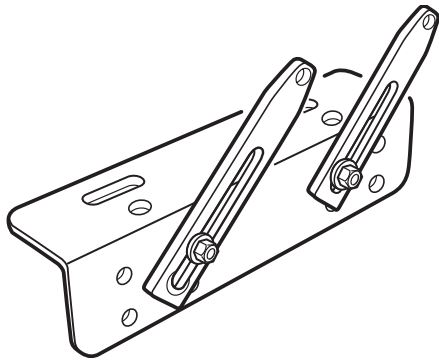
All feedback responses are added to the Tech Line database so the next caller gets a repair procedure improved by your feedback.

Reporting your vehicle fixes to Tech Line also helps improve product quality. Tech Line info gets reviewed every day and acts as an early warning of potential quality issues.

---

## Be Smart! Always Use the Transmission Adapter

In the June '05 issue of *ServiceNews*, we gave you a complete list of tools and equipment you need to replace Acura A/Ts (see the article "Required Special Tools and Equipment for A/T Replacement"). Here's something we really need to emphasize: *Always* use the transmission adapter T/N VSB02C000012. This piece of hardware securely holds the A/T to the transmission jack. If you don't use it, and the A/T falls off the jack and gets dinged, your dealership will get dinged a **\$1,000** core loss charge. Ouch!



## Use Worm-Style Clamps With the ATF Cooler Cleaner

The spring-style clamps used on the ATF cooler lines are made to hold the cooler lines to the ATF cooler under normal operating conditions. The ATF Cooler Cleaner (P/N GHTTTCF6H) uses high pressure (**100 psi**) to do its job. With the pump motor running, the spring-style clamps can walk off or disconnect, and you'll wind up with a real mess to clean up in your shop.

In March of this year, we sent each Acura dealership a pair of high-quality worm-style clamps to replace the original spring-style clamps. These clamps were part of a cooler cleaner update kit and securely hold the cooler line in place. They've got a blue cap for easy identification. Need some more? Just call G-TEC, Inc. at **417-725-6400**.

## Flat-Towing Behind a Motorhome

Need to flat-tow a '05 or '06 model year vehicle behind a motorhome? Here's some important info to keep in mind when you do.

Not all Acura models are approved for flat-towing. Models are approved only after going through extensive testing by our R & D folks. Here are the models currently approved. Additional models might be added.

### '05 Models

- MDX
- RSX
- TSX

### '06 Models (none can be flat-towed)

For info on flat-towing '05 and earlier model year vehicles, refer to the appropriate O/M. If you can't find any instructions in the O/M, then call Acura Client Services at **800-382-2238**. They'll provide a letter with towing instructions only for '05 and earlier model year vehicles.

Since no '06 model year vehicles can be flat-towed, towing instructions for unapproved vehicles aren't available from Acura Client Services.

## Rattle, Creak, Squeak From the Moonroof While Driving

Got a '04-05 TSX in your shop that rattles, creaks, or squeaks from the moonroof while driving? The noise could be caused by the glass seal rubbing against the painted body surface.

To isolate and fix this problem, clean the glass seal, then rub some Shin Etsu Silicone Grease (P/N 08798-9013) into the seal. Now, test-drive the vehicle. If the noise is gone, remove the grease with rubbing alcohol, and apply a strip of squeak reduction tape (P/N 70200-ALL-999).

Test-drive the vehicle again. If you don't hear the noise, you're done. If you still hear the noise, try removing the stethoscope tip and listening for the noise with just the hose.

---

## Custom Driver's Seat or Side Mirror Position Won't Set

Getting any complaints from '04-05 TL owners that the driver's seat, the side mirrors, or both won't move to the customized settings when they use the keyless remote to get into the vehicle?

For vehicles with A/T, the settings should always take effect, provided your clients have properly set the seat and mirrors according to the owner's manual, and they're using the right keyless remote (Driver 1 or Driver 2).

For vehicles with M/T, however, you also need to set the parking brake, or the settings won't kick in. Setting the parking brake activates the driver's position memory system (DPMS).

## Navigation System HDD Replacement

If the navigation system hard disc drive (HDD) in a '96-99 3.5RL or '99 3.2TL is either lost, stolen, or stops working, you need to replace it with a Compact Flash memory card and PCMCIA adapter (P/N 39010-SZ3-A91).

The new Compact Flash memory card doesn't contain a navigation database coverage area (DCA). To load the appropriate DCA, refer to S/B 97-016, *1996-99 3.5RL: TQI of the Navigation System* or S/B 98-023, *1999 3.2TL: TQI of the Navigation System*. If you need help loading a DCA to the card, call the iN help desk at **800-245-4343**.

## Remember to Initialize to Avoid Problems

Acura models are coming out with more and more systems that need some kind of initialization procedure done if power is removed or the battery is disconnected. Doing the idle learn and CKP pattern learn for the ECM/PCM, resetting the power window control unit, and initializing the OPDS unit are some familiar examples of these procedures.

We can't emphasize enough how important it is to do the appropriate initialization procedure. If you don't, you could wind up doing a lot of wasted troubleshooting and repair.

The repair procedures in Acura service publications are written with the appropriate initialization steps. Just follow the procedure steps to the letter, and you can't go wrong.



 **ACURA ServiceNews**

©2005 American Honda Motor Co., Inc. - All Rights Reserved. Published by AHM Parts and Service Communications, 1919 Torrance Blvd., Torrance, CA 90501-2746. All suggestions become the property of American Honda Motor Co., Inc.; sending a suggestion gives Honda permission to publish it without further consideration.

BSN 30526 (0508)

